



**DD AUDIO** TRUE TO THE SOURCE.®

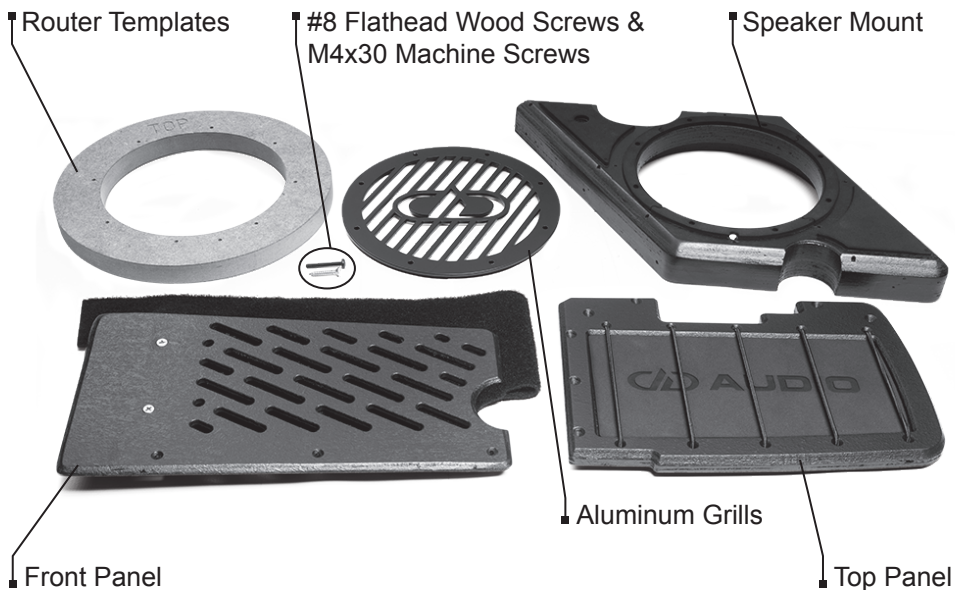
4025 NW 36th St., Oklahoma City, OK 73112 • (405) 239-2800

DDAUDIO.COM



## Included In The Kit:

- Left and Right HD8-SBK Enclosures (Speaker Mount, Front Panel, Top Panel)
- (2) Router Templates
- Stainless Hardware for Speaker, Enclosure and Grill Mounting. (20) #8 Flathead Wood Screws, (32) M4x30 Machine Screws
- (2) Powder Coated Aluminum Grills



## Installation Tools Required:

- Right Angle Drill or Drill with a Right Angle Adaptor
- #2 Phillips Screwdriver and or Phillips Bit for Your Drill
- Jigsaw and Appropriate Blade
- Hand Router and Flush Trim Router Bit with a Top Bearing
- Blue Painters Tape (wide roll)

### Instructional Video HD8-SBK:

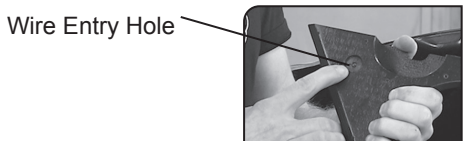
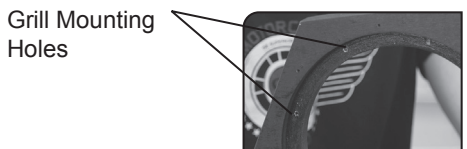
<https://youtu.be/bm09ZZFAjr0>

HD8-SBK  
Instructional  
video



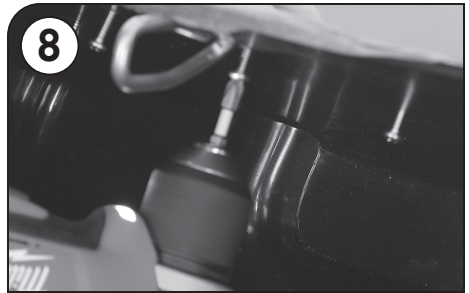
## Cutting The Bags:

1. Remove the bags from the bike and place them on a flat working surface that is covered with something soft that won't scratch the bag's paint.
2. For ease of installation we recommend removing the lid and rear mounting grommet from the bag. Removing the lid is optional, but we highly recommend it as it will make the installation process much easier.
3. Tape off the inside and outside of the bag wall where the speaker and enclosure will be mounting.
4. Lay the bag down on your working surface with the hinge side facing up.
5. Position the Speaker Mount in the bag. The side of the mount with the foam gasket faces the inner mounting wall of the bag. The half circle cutout will fit over the half circle rail support extrusion in the bottom of the bag. We recommend using a clamp to hold the speaker mount in position while marking your mounting holes.
6. Using a 5/32" drill bit, mark the mounting holes for the grill (inner ring holes). Mark these hole locations by holding and twisting the drill bits by hand, just enough to make visible marks on the inner wall tape. With a 1/8" drill bit, mark the wire entry point located in the upper corner of the bracket. This is the hole that has a small recess around it on the foam side of the bracket.



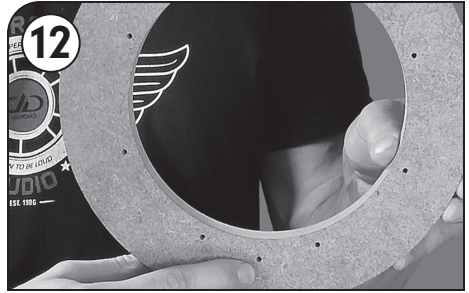
## Continue Cutting The Bags

7. Remove the mount and drill the grill holes out with a 11/64" bit using your right angle drill or right angle adapter. With a 1/8" drill bit, drill through the wire entry point location. This will provide a center point for the wire entry in a later step.
8. Once the holes are drilled, position the router template on the outside of the bag with the "TOP" text positioned towards the top of the bag. Using (8) of the #8 Flathead Wood Screws affix the router template to the bag. The screws will come from the inside of the bag and screw into the router template. It's important to partially start each screw and tighten them down gradually in a star-like pattern to ensure the proper and even seating of the router template.
9. Once the router template is securely attached to the saddle bag, drill a large enough hole to insert your jigsaw blade inside the speaker cutout area around a 1/4" from the inner wall of the router template.
10. Using the jigsaw cut out the majority of the speaker hole making sure to leave no more than 1/4" of material around the inner edge of the router template.



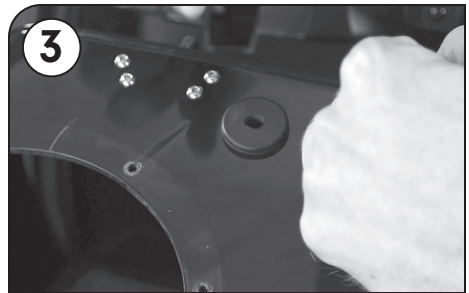
## Continue Cutting The Bags

11. Once you've cut out the majority of the speaker hole material use your hand router to remove the remaining material.
12. With the router template still attached, use an  $\frac{1}{8}$ " drill bit, mark the weep hole pilot. This hole sits slightly below the grill mounting holes. Mark the hole location or go ahead and drill through the bag. This hole will be drilled to size after the removal of the router template. Remove the router template. Using a  $\frac{1}{4}$ " drill bit, drill through the **bag** at the weep hole location marked in **Step 12**. This hole will allow water to drain from the speaker bracket out through hole you just drilled and then out through the drainage channel in the grill's foam gasket.
13. Remove the painters tape.



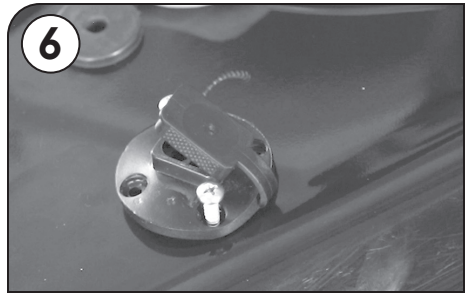
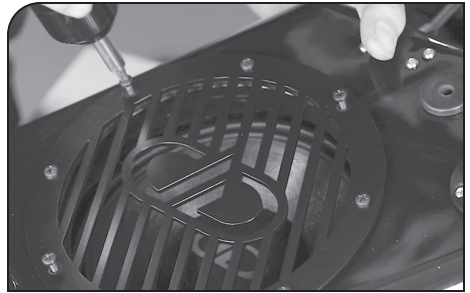
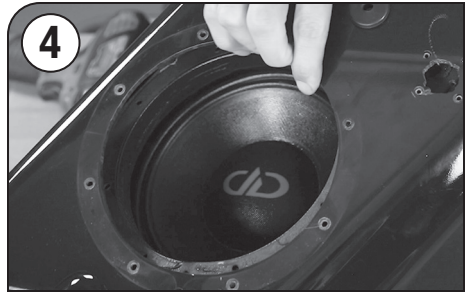
## Installing The Enclosures:

1. If using a VOW8 remove and invert the rubber gasket on the speaker to be installed. Mount the speaker to the speaker mount using (8) of the M4x30 Machine Screws. Be sure to only partially start all screws before fully tightening them down to ensure proper thread engagement. If using a quick disconnect plug adapter, it's easiest to go ahead and attach the speaker wire to the speaker in this step.
2. Attach the vented front panel to the speaker mount using (3) of the #8 Flathead Wood Screws. For easier alignment, start the screws so the tips just protrude the backside of the front panel. This will allow them to catch and center on the pre-drilled holes located on the front edge of the speaker mount. Once the front panel is properly aligned you can tighten the screws down.
3. Replace the bag's stock rear rubber mounting grommet.



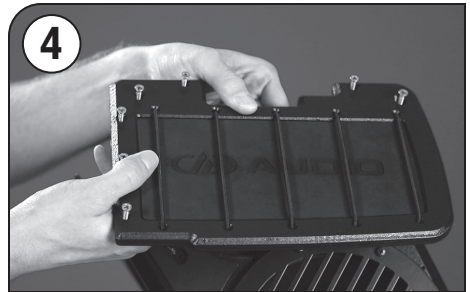
## Continue Installing The Enclosure

4. Place the speaker mount assembly into the bag and ensure the grill mounting holes on the bag line up with the holes on the speaker mount. While holding the speaker mount in place, attach the speaker grill to the outside of the bag using the pre-drilled holes and (8) of the M4x30 Machine Screws. It is important to once again only partially start each screw before fully tightening them down in a star-like pattern to ensure proper thread engagement.
5. On the inside of the bag, make sure the trim carpet is neatly folded back towards the back of the bag on the side and the bottom.
6. Using the 1/8" wire entry hole install your speaker wire grommet or connector. You will most likely need to enlarge the hole to the correct size for your chosen grommet or connector terminal. If using a quick disconnect we suggest connecting the wire to your speaker at this time.
7. Replace the bag lid. Be sure to test the functionality of closing and latching the bag at this time. If you feel the bag is difficult to close and latch, loosen the 8 M4x30 Machine Screws on the grill about 1/8". Close and latch the bag lid, and then re-tighten the grill mount screws.



## Re-Mounting The Saddle Bag And Final Enclosure Assembly.

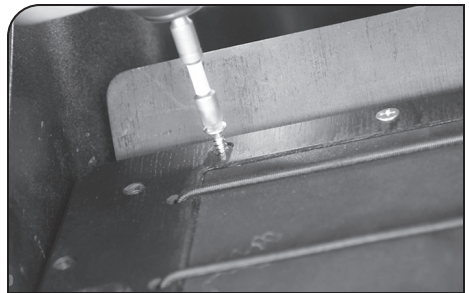
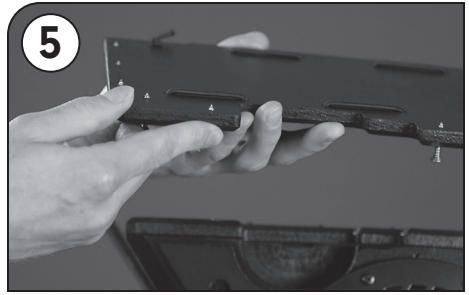
1. If using a speaker wire grommet, run the speaker wire through the grommet into the bag. If using a connector connect the male terminal to the female terminal you installed in your bag.
2. With the bag lid open, seat the saddle bag on the saddle bag support rail and align the mounting holes to the threaded studs on the motorcycle. Allow the rear mounting stud to protrude into the bag just enough to start the threads on the rear bag mounting nut. Once the rear mounting nut threads are engaged, go ahead and fully tighten the rear mounting nut. This will be a tight fit, but it fits! We promise!
3. Replace the front saddle bag mounting nut and fully tighten.
4. Place the enclosure's padded top panel on top of the speaker mount and front panel gusset. You will need to tilt the curved outer edge under the outer rim of the saddle bag, and then press the inner edge to the top of the speaker mount. The rectangular notch aligns with the bag's latching hardware and mounting nut.





**Continue Re-Mounting The Saddle Bag And Final Enclosure Assembly.**

5. Ensure the (7) countersunk mounting holes line up with the (7) pre-drilled pilot holes on the top of the speaker mount and front panel gusset. Using (7) of the #8 Flathead Wood Screws, affix the top platform to the speaker mount and front panel gusset. Alignment may be made easier by partially starting the screws so that the screw tips protrude the underside of the top platform and catch the centers of the pre-drilled pilot holes located on the speaker mount and front panel gusset. Once aligned, tighten down the screws.
6. Close the bag, tune the amp, play loud music!



If you have any questions regarding setup, installation, or warranty please contact the DD Audio technical support team by email at [service@ddaudio.com](mailto:service@ddaudio.com) or by phone at 405-239-2800.